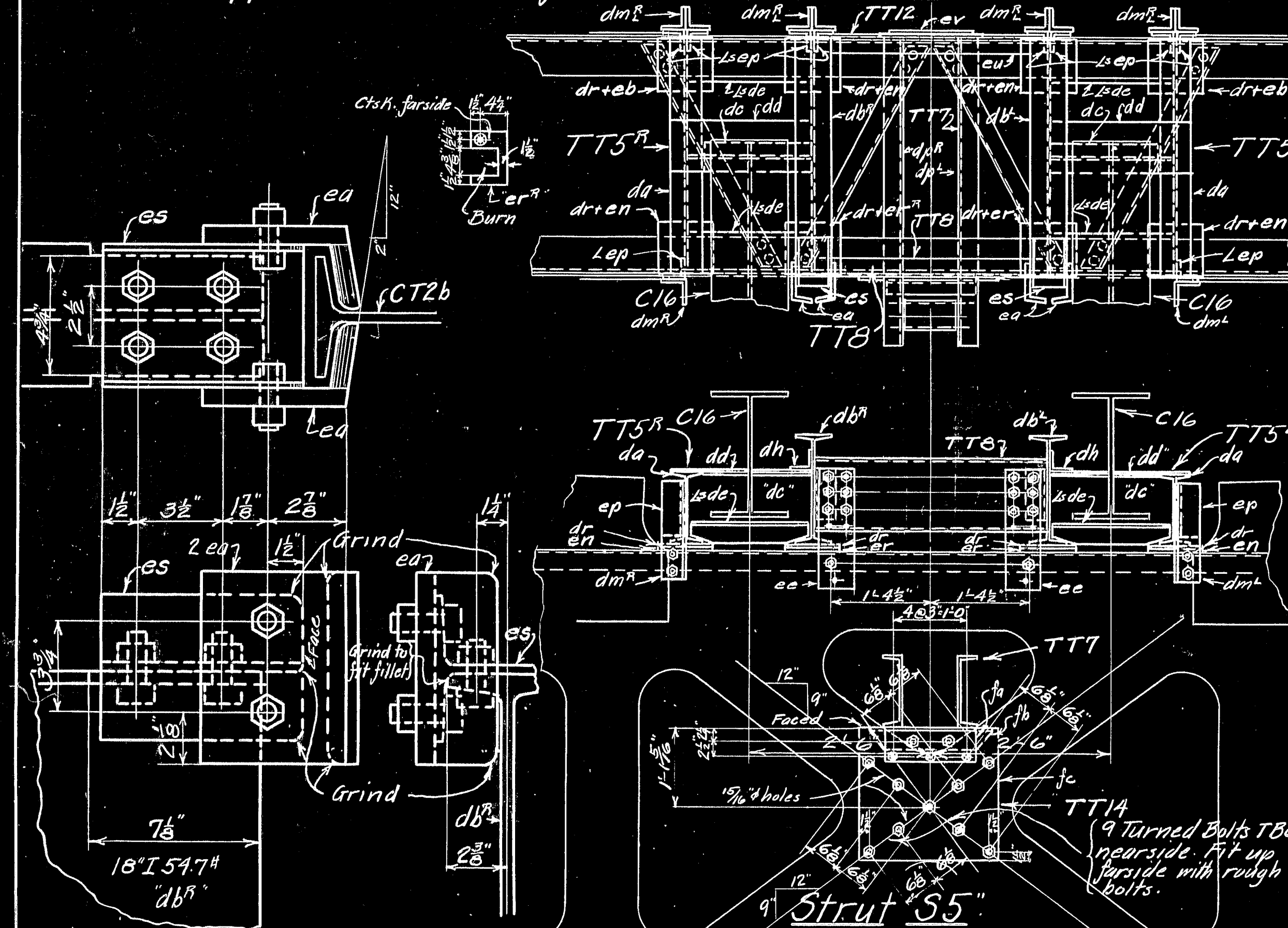


Section thru beams taken on Line X-X.

Strut 33
Approach Side.

Supports at Strut 33 for Tower Erection Traveler.

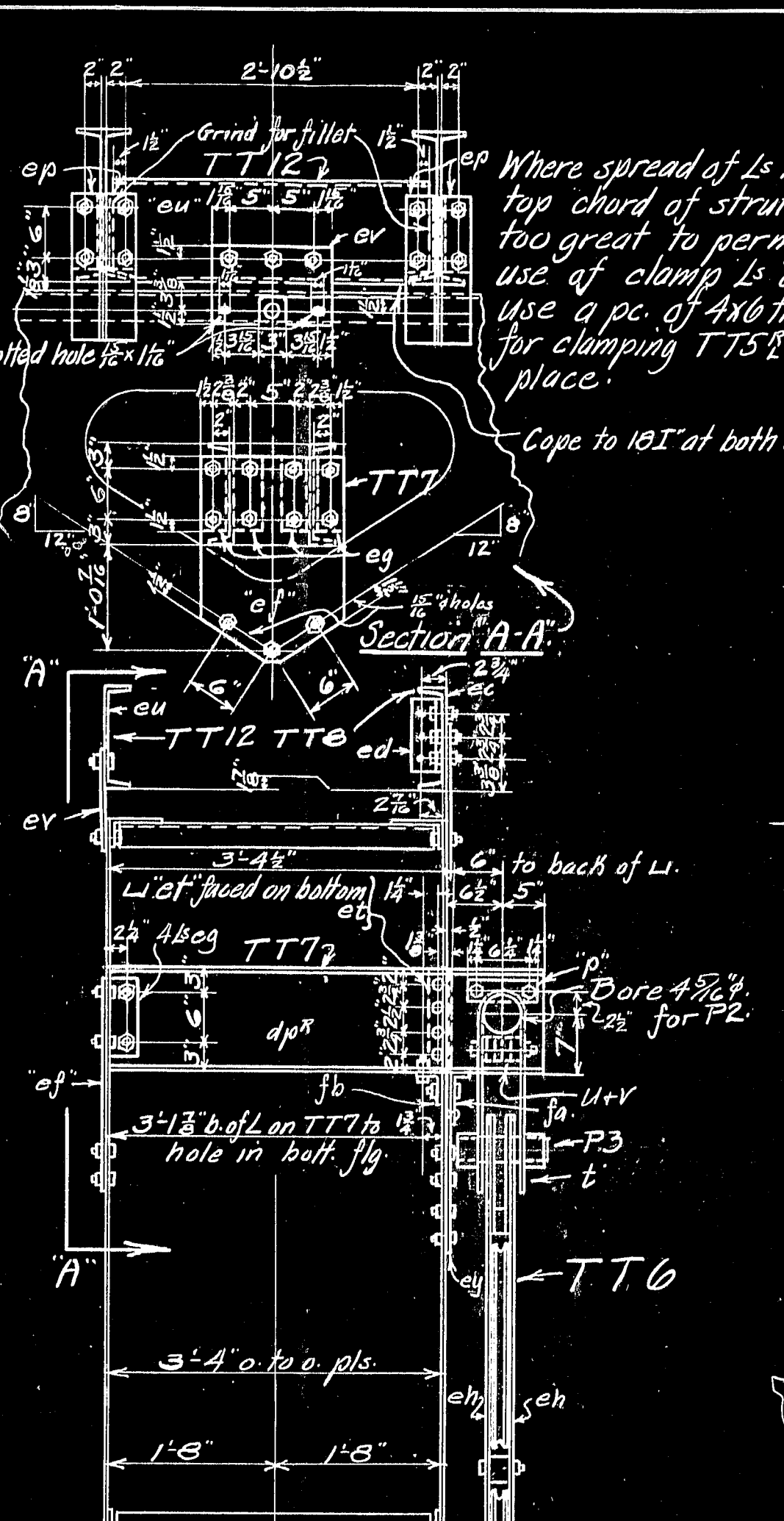


Strut 35
Approach Side

Supports and Lifting Device at Strut 35 for Tower Erection Traveler.

Bill of Material

No.	Mark	Description	Length	Remarks
6	da	12" I 31.8"	3'-3 1/2"	+ 3/8"
6	db	18" I 54.7"	3'-3 1/2"	+ 3/8"
6	dc	12" I 35.0"	1'-8"	+ 3/8" Cope
6	dd	8 1/2 x 3/4 Pl.	1'-11"	Ship bolted
24	de	3 1/2 x 3 1/2 x 3/8 Pl.	1'-6"	Clip together
16	df	3 1/2 x 3 1/2 x 3/8 Pl.	2'-6"	making 4
48	dg	6 x 4 x 1/2 Ls	4'-6"	Grind
6	dh	3 1/2 x 3 1/2 x 3/8 Pl.	8"	Pos. TT5L
24	di	4 x 4 x 3/8 Ls	8"	Ship loose.
26	dm	4 x 4 x 1/2 Ls	1'-5"	20 bolted fast on TT5R
4	dn	3 1/2 x 1/2 Pls.	5"	Bolt fast on
4	em	3 1/2 x 3/4 Pls.	5"	TT5R
24	dr	5 1/2 x 3/4 Pls.	8"	Fast on TT5R
4	eb	5 1/2 x 3/4 Pls.	8"	2 shipped loose
16	en	5 1/2 x 3/4 Pls.	8"	2 shipped loose
26	ep	4 x 3 1/2 x 1/2 Ls	4"	Fast on TT5R
4	er	5 1/2 x 3/4 Pls.	8"	Ship loose.
12	es	6" H 27.5"	8"	F.E. Fast on
12	et	6" H 27.5"	8"	Bent. 4 TT5R
24	fh	3 x 2 1/2 x 3/8 Pls.	10 1/2"	F.E. 4 TT5R
3	ec	12" I 20.7"	3'-2"	Ship bolted
6	ed	4 x 4 x 3/8 Ls	8"	together in
6	ee	7 x 3/8 Pl.	1'-7 1/2"	5 TT5R
2	df	12" I 20.7"	4'-3 1/2"	Ship bolted
1	et	9" I 13.4"	1'-0"	F.E. together making
1	t	8 x 1/2 Pl. bent over	in 4 1/2"	ord. file 12-3-10.
2	p	2 1/2 x 3/8 Hex. pl.	8 1/2"	" 12-3-10.
1	p2	4 1/2 pin	1 1/2"	" 12-3-10.
1	p3	3 1/4 "	1 1/2"	" 12-3-10.
1	ef	1 1/2 x 1/4 Pl.	2'-0"	"
4	eg	4 x 3 1/2 x 3/8 Ls	9"	"
2	eh	7 1/2 x 3/4 Pl.	7'-4"	bored
2	ei	7 1/2 x 3/4 Pls.	11"	"
2	ej	2 1/2 x 3/4 Pls.	5"	Ship riveted
2	ek	2 1/2 x 3/4 Pls.	5"	and bolted
1	el	2 1/2 x 3/4 Pls.	5"	together
1	em	2 1/2 x 3/4 Pls.	5"	making 17
1	en	2 1/2 x 3/4 Pls.	5"	TT5R
2	eo	3 x 2 1/2 Wash. blocks	8"	"
1	ew	2 1/2 x 3/4 Pl.	7 1/2"	"
4	u	3 x 1" pl.	8"	Fast in "t" above
1	y	3 x 1/2 "	8"	"
3	eu	12" I 20.7"	3'-1 1/2"	Exact. Bolt together
3	ev	9 3/8 x 3/8 Pl.	1'-1 1/2"	making 3 P. TT12
1	ew	10 1/2 x 1/2 Pl.	2'-1 1/2"	Ship loose.
1	ex	16 1/2 x 1/2 Pl.	2'-2 1/2"	"
1	ey	23 1/2 x 1/2 Pl.	1'-0 1/2"	"
1	ez	23 1/2 x 1/2 Pl.	1'-3"	"
1	fa	4 x 3 1/2 x 3/8 Ls	1'-8"	Bolt + riv. on
1	fb	22 1/2 x 1/2 Pl.	1'-10 1/2"	making TT12
1	fc	20 1/2 x 1/2 Pl.	1'-11 1/2"	"
1	fd	4 x 4 x 3/8 Ls	7 1/2"	"
2	fe	5 1/2 x 3/4 Pl.	8"	"



Section Y-Y.

Supports and Lifting Device at Strut 34 for Tower Erection Traveler.

Bolt List

Quantity	Size	Material	Remarks
18-16 1/4 bolts	1/2" u.h.		
28-3/4 bolts	3/4" u.h.		
176	do.	2" u.h.	
70	do.	2 1/2" u.h.	
50	do.	2 3/4" u.h.	
4	do.	3" u.h.	
30	do.	2 1/2" u.h.	
24	do.	1 1/2" u.h.	
10	3/4" Chk. Hk.	3" oval	
48	2 1/2 x 3/8 Washers	1/2" hole	
96	2 1/2 x 1/4 "	1/2" hole	

Wanted:

Quantity	Size	Material	Remarks
4	P. 3	marked TT5R	
1	P. 4	" TT5L	
1	P. 5	" TT5R	
3	P. 6	" TT5L	
2	P. 7	" TT5R	
3	P. 8	" TT5L	
1	P. 9	" TT5R	
1	P. 10	" TT5L	
1	P. 11	" TT5R	
1	P. 12	" TT5L	
1	P. 13	" TT5R	
1	P. 14	" TT5L	
1	P. 15	" TT5R	
1	P. 16	" TT5L	
1	P. 17	" TT5R	
1	P. 18	" TT5L	
1	P. 19	" TT5R	
1	P. 20	" TT5L	
1	P. 21	" TT5R	
1	P. 22	" TT5L	
1	P. 23	" TT5R	
1	P. 24	" TT5L	
1	P. 25	" TT5R	
1	P. 26	" TT5L	
1	P. 27	" TT5R	
1	P. 28	" TT5L	
1	P. 29	" TT5R	
1	P. 30	" TT5L	
1	P. 31	" TT5R	
1	P. 32	" TT5L	
1	P. 33	" TT5R	
1	P. 34	" TT5L	
1	P. 35	" TT5R	
1	P. 36	" TT5L	
1	P. 37	" TT5R	
1	P. 38	" TT5L	
1	P. 39	" TT5R	
1	P. 40	" TT5L	
1	P. 41	" TT5R	
1	P. 42	" TT5L	
1	P. 43	" TT5R	
1	P. 44	" TT5L	
1	P. 45	" TT5R	
1	P. 46	" TT5L	
1	P. 47	" TT5R	
1	P. 48	" TT5L	
1	P. 49	" TT5R	
1	P. 50	" TT5L	
1	P. 51	" TT5R	
1	P. 52	" TT5L	
1	P. 53	" TT5R	
1	P. 54	" TT5L	
1	P. 55	" TT5R	
1	P. 56	" TT5L	
1	P. 57	" TT5R	
1	P. 58	" TT5L	
1	P. 59	" TT5R	
1	P. 60	" TT5L	
1	P. 61	" TT5R	
1	P. 62	" TT5L	
1	P. 63	" TT5R	
1	P. 64	" TT5L	
1	P. 65	" TT5R	
1	P. 66	" TT5L	
1	P. 67	" TT5R	
1	P. 68	" TT5L	
1	P. 69	" TT5R	
1	P. 70	" TT5L	
1	P. 71	" TT5R	
1	P. 72	" TT5L	
1	P. 73	" TT5R	
1	P. 74	" TT5L	
1	P. 75	" TT5R	
1	P. 76	" TT5L	
1	P. 77	" TT5R	
1	P. 78	" TT5L	
1	P. 79	" TT5R	
1	P. 80	" TT5L	
1	P. 81	" TT5R	
1	P. 82	" TT5L	
1	P. 83	" TT5R	
1	P. 84	" TT5L	
1	P. 85	" TT5R	
1	P. 86	" TT5L	
1	P. 87	" TT5R	
1	P. 88	" TT5L	
1	P. 89	" TT5R	
1	P. 90	" TT5L	
1	P. 91	" TT5R	
1	P. 92	" TT5L	
1	P. 93	" TT5R	
1	P. 94	" TT5L	
1	P. 95	" TT5R	
1	P. 96	" TT5L	
1	P. 97	" TT5R	
1	P. 98	" TT5L	
1	P. 99	" TT5R	
1	P. 100	" TT5L	

Field Note:
Make 2 Pcs. TT5R from TT5L by removing 6 Ls ep. 4 Pcs. dn + 4 Pcs. en. and placing shim plates as called for on sketch at left.

General Notes:
Paint 1 coat of black paint. Open holes 1/2" unless noted. Fills 2 1/2" unless noted.

Guide for Traveler for Erecting Towers.
P.W.A. Project No. Me. 10101.
Deer Isle Sedgwick Bridge District.
Bridge over Eggemoggin Reach from Little Deer Isle to Sedgwick Hancock County, Maine.
Robinson & Steinman Engineers, New York City.
The Phoenix Bridge Co. Erection Dept.

Engr. A. S. Foulds.
Draftsman Frank W. Peirce
Scale 3/4" = 1'-0"
Date 4/13/38.

Supt. of Erection C.O. 457. Dwg T3D.

